



Progress of barley cultivation in Iceland

Sæmundur Sveinsson
Agricultural University of Iceland



Overview



Northern Cereals

- Historic background
- Status today
- Future thoughts



**Northern Periphery and
Arctic Programme**
2014-2020



EUROPEAN UNION

Investing in your future
European Regional Development Fund

Photo: Vigfús Sigurgeirsson

Hvanneyri 1938



Gunnarsholti 1949



Northern Periphery and
Arctic Programme

2014-2020



EUROPEAN UNION

Investing in your future
European Regional Development Fund

Photo
Runólfur Sveinsson



Gunnarsholti 1951



Northern Periphery and
Arctic Programme

2014-2020



EUROPEAN UNION

Investing in your future
European Regional Development Fund

Gunnarsholti 1951.



Northern Periphery and
Arctic Programme

2014-2020



EUROPEAN UNION

Investing in your future
European Regional Development Fund

Ljósmynd Runólfur Sveinsson



Northern Periphery and
Arctic Programme

2014-2020

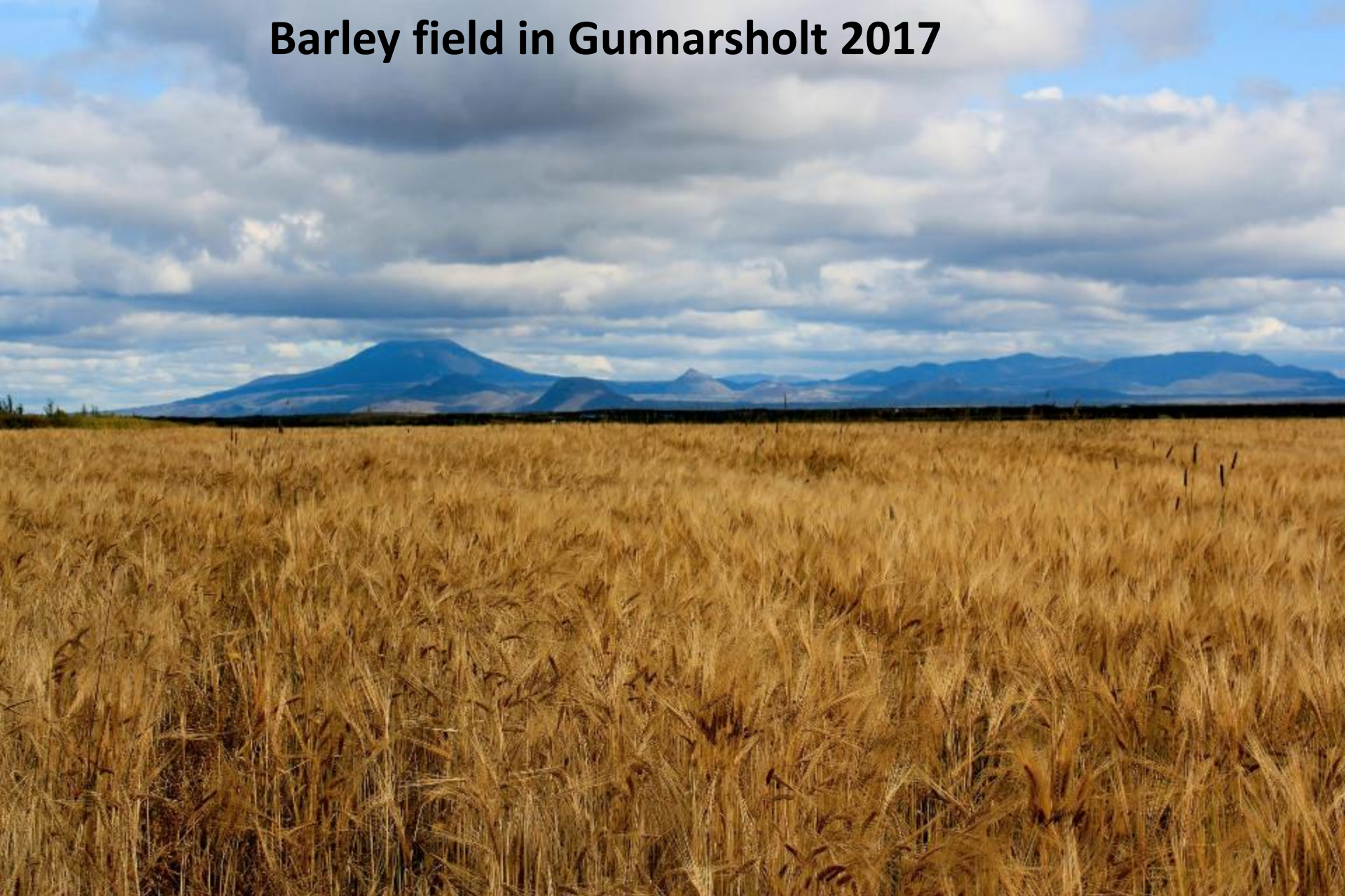


EUROPEAN UNION

Investing in your future
European Regional Development Fund

Mynd: mbl.is

Barley field in Gunnarsholt 2017



Northern Periphery and
Arctic Programme
2014-2020



EUROPEAN UNION

Investing in your future
European Regional Development Fund

Mynd: Valdimar Leifsson

Sámstaðir Fljótshlíð, 1939



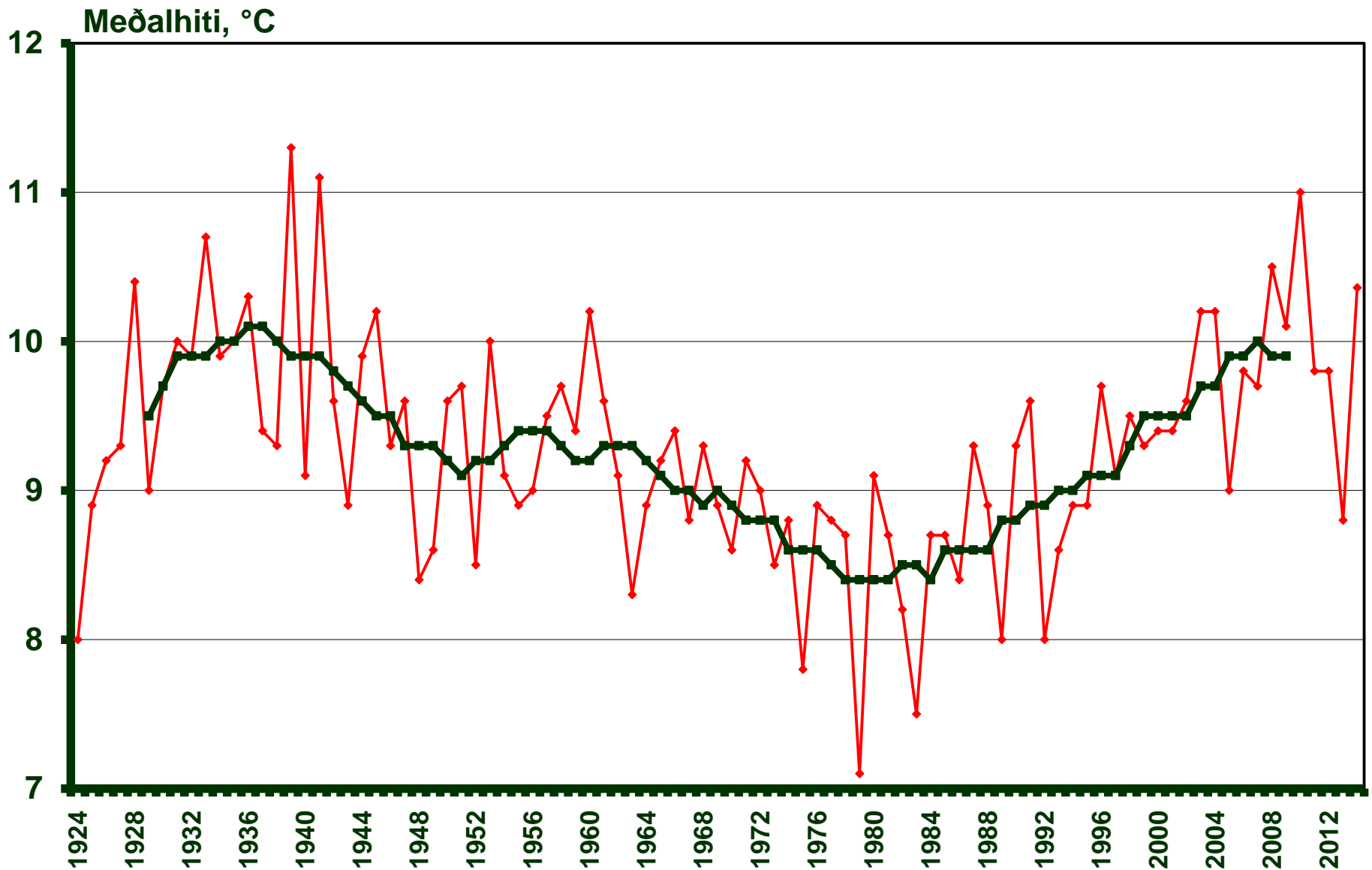
Gunnarsholt 1961



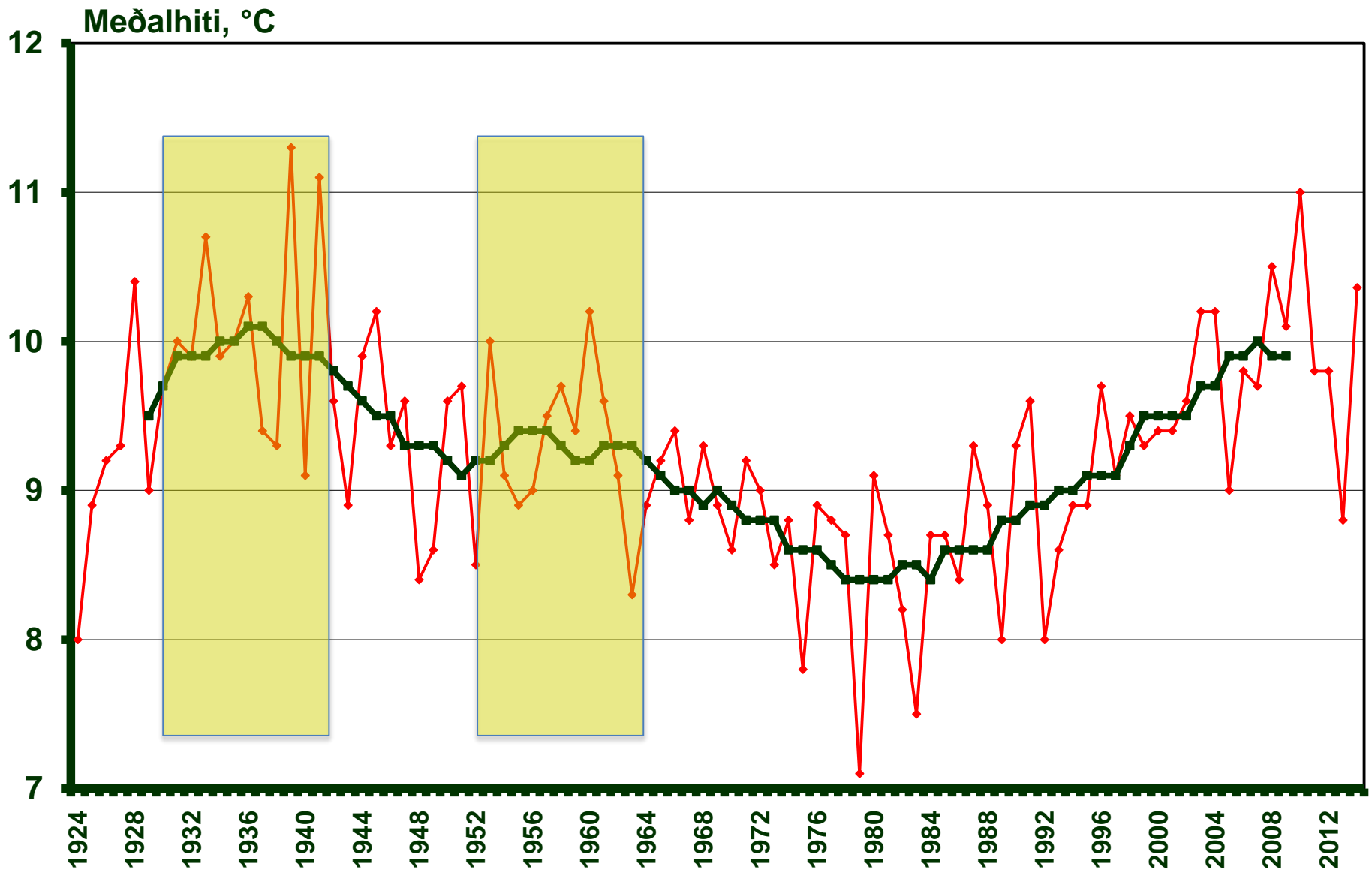
Northern Cereals



Summer temperature Reykjavík, May - September, 1924-2014



Summer temperature Reykjavík, May - September, 1924-2014



Fyrsti hveitiakurinn sleginn hér á landi

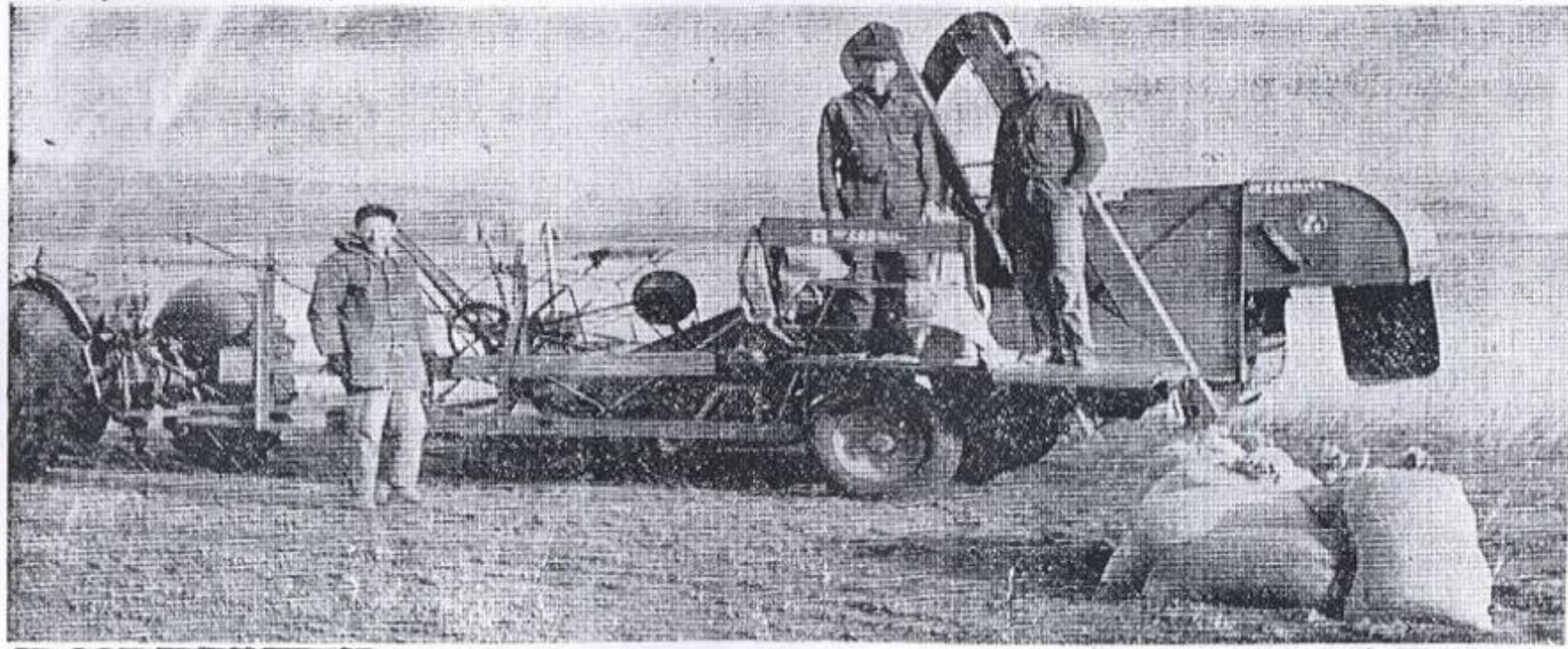
JHM-Skógum, 28. september.

ÞESSA DÁGANA er verið að skera kornakurinn á Skógasandi undir Eyjafjöllum. Uppskeran er fremur rýr og mun um að kenna þurru

og köldu sumri. Bygg er ræktað á Skógasandi á 28 hektörum, hafrar á tveimur hektörum og hveiti á þremur hektörum. — Þessi kornskurður er sögulega allmikill viðburður, því

að þarna mun vera sleginn fyrsti hveitiakurinn héraðs frá upphafi Íslandsbyggðar. Á myndinni er kornskurðarvélin á hveitiakrinum, nær or slegið, en fjær sést bygjandi

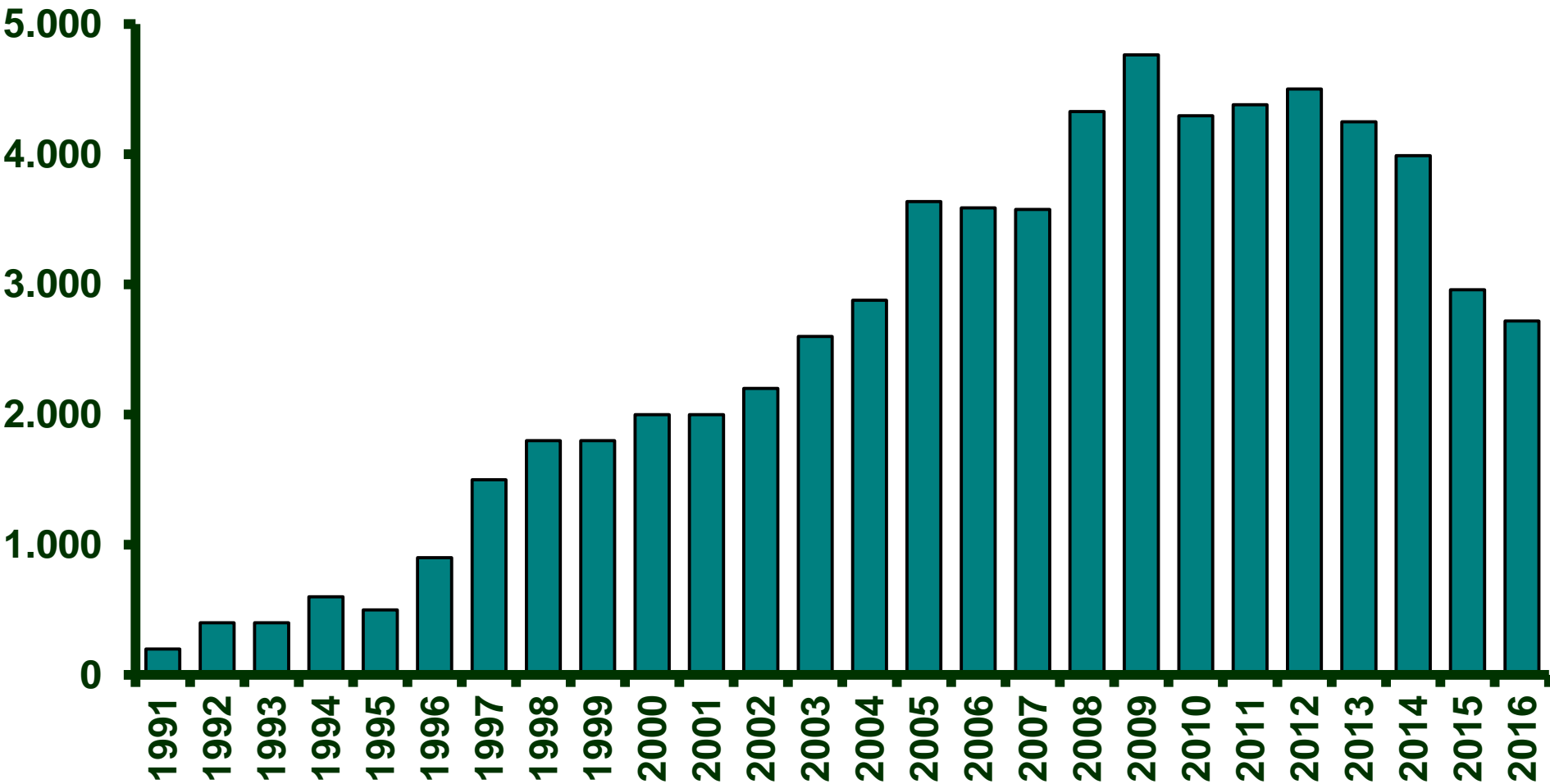
hveitiakurinn. Við dráttarvélin er Eggert Ólafsson á Þorvaldseyri og uppi á kornskurðarvélinni eru Jón Sigurðsson á Eyvindarhólum og Sigurbergur Sigurgeirsson í Hlíð.



Barley fields in Iceland



Northern Cereals

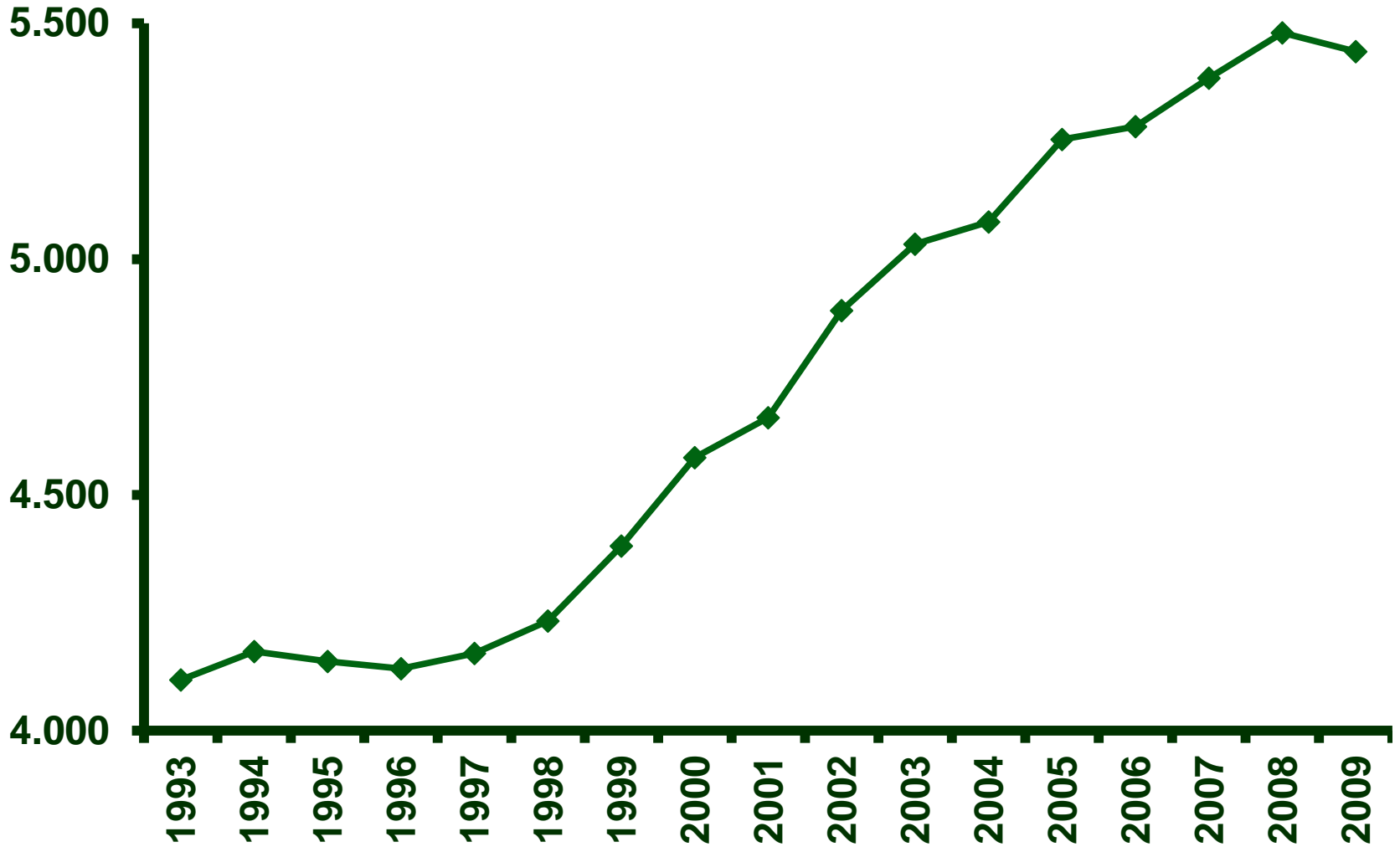


Northern Periphery and Arctic Programme
2014-2020

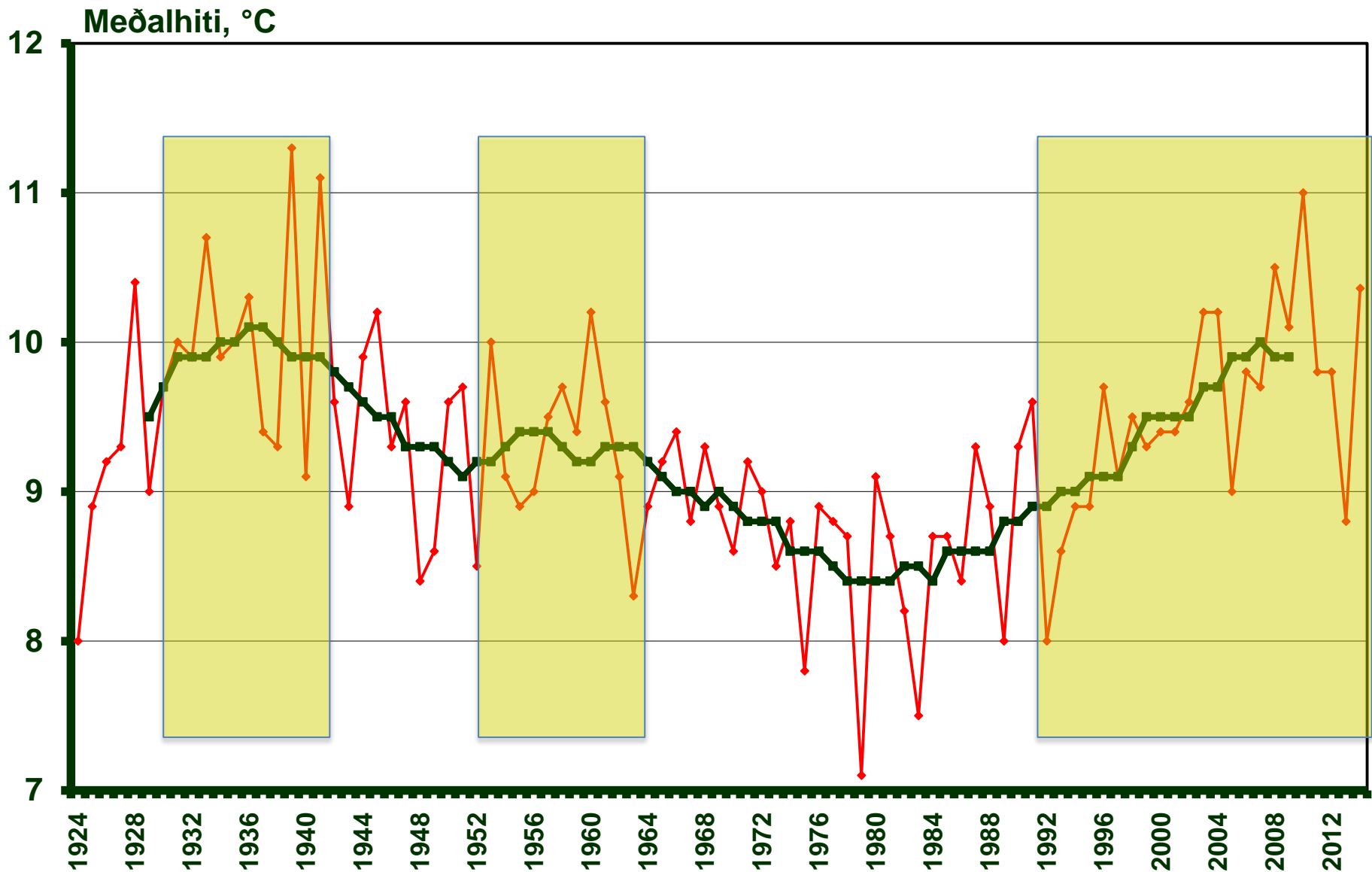


EUROPEAN UNION
Investing in your future
European Regional Development Fund

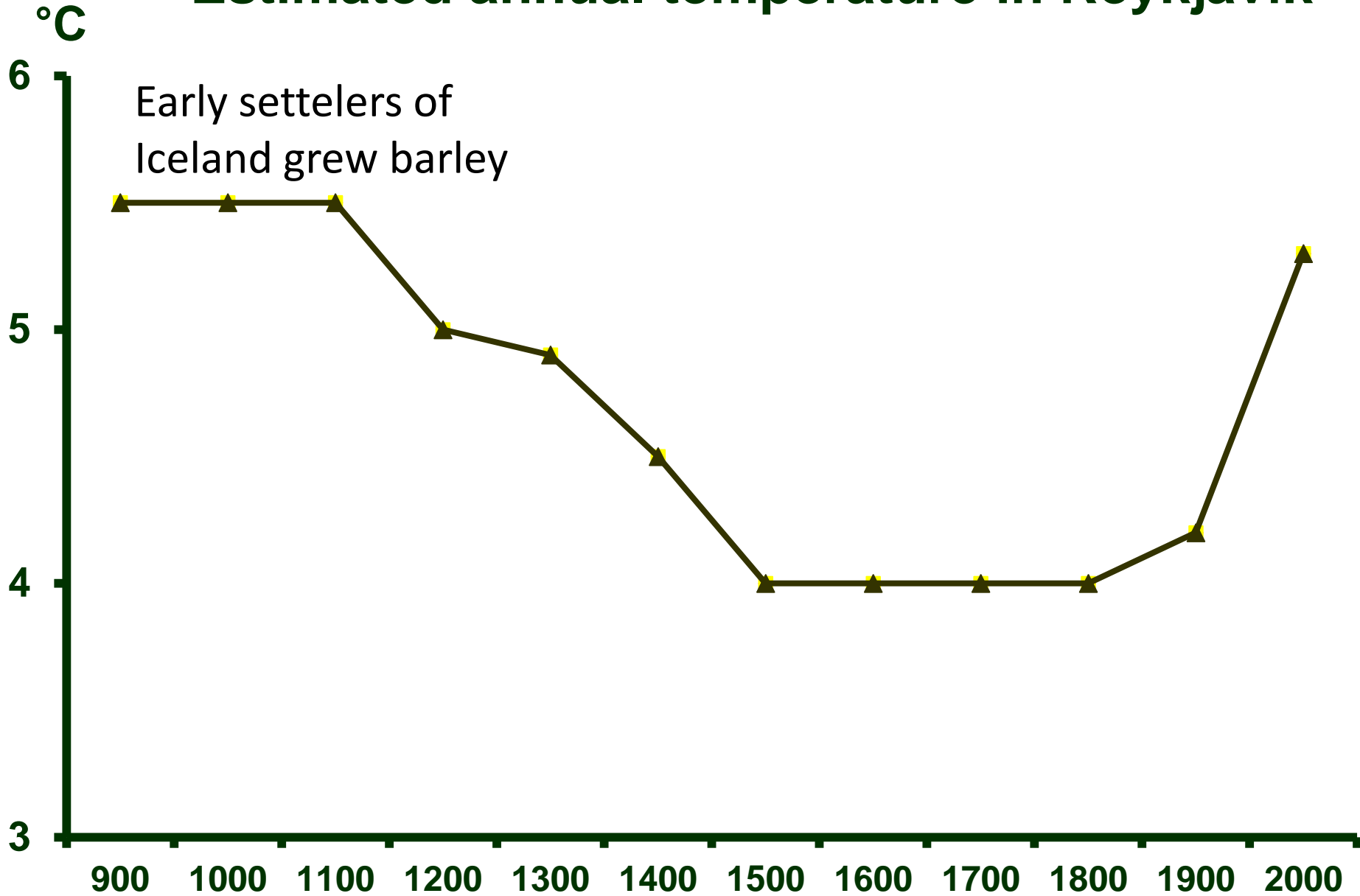
Milk yields in Iceland (kg)



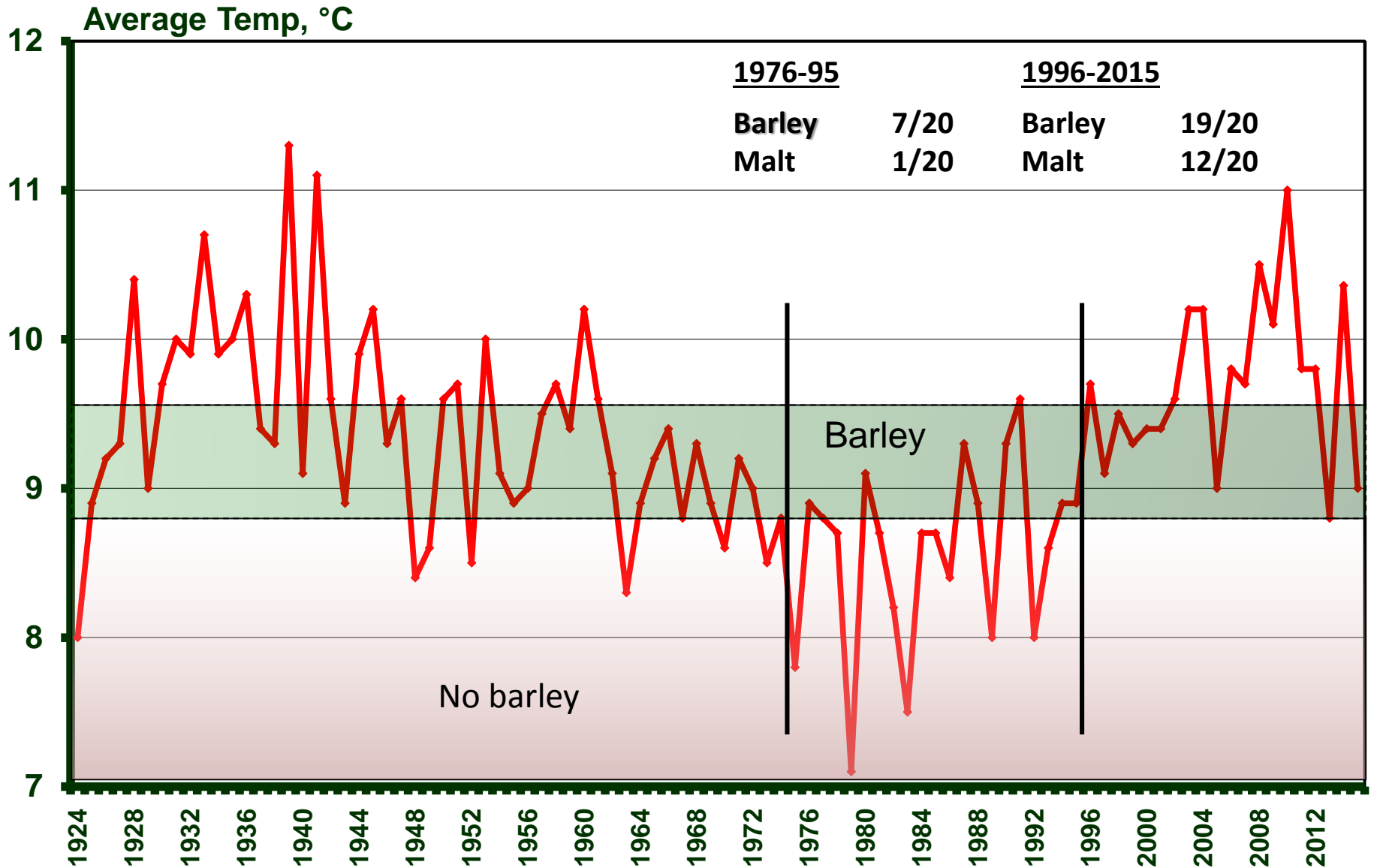
Summer temperature Reykjavík, May - September, 1924-2014



Estimated annual temperature in Reykjavík



Summer temperature Reykjavík, May - September, 1924-2015

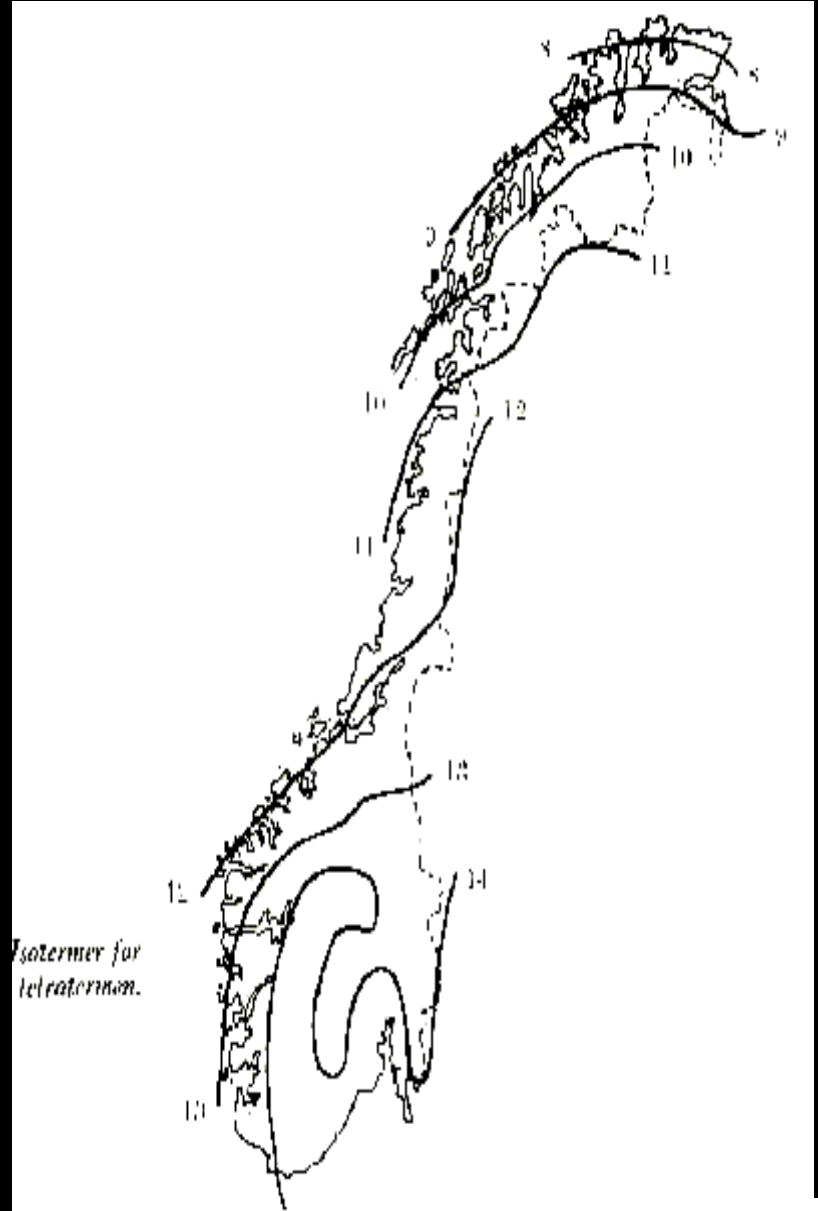




Northern Cereals

Norge

Tetratermen
juni- september



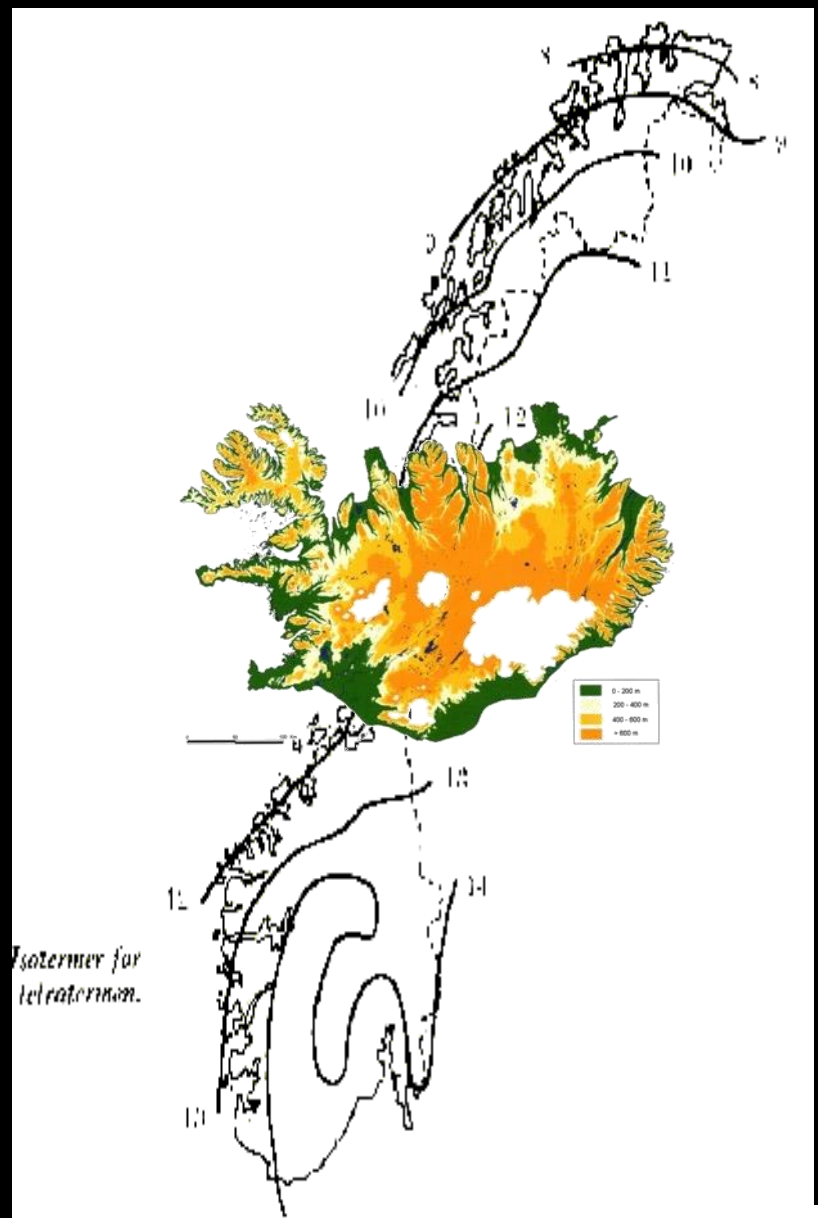
Isothermer for tetratearmer.



Northern Cereals

Ísland

På den rette breddegrad



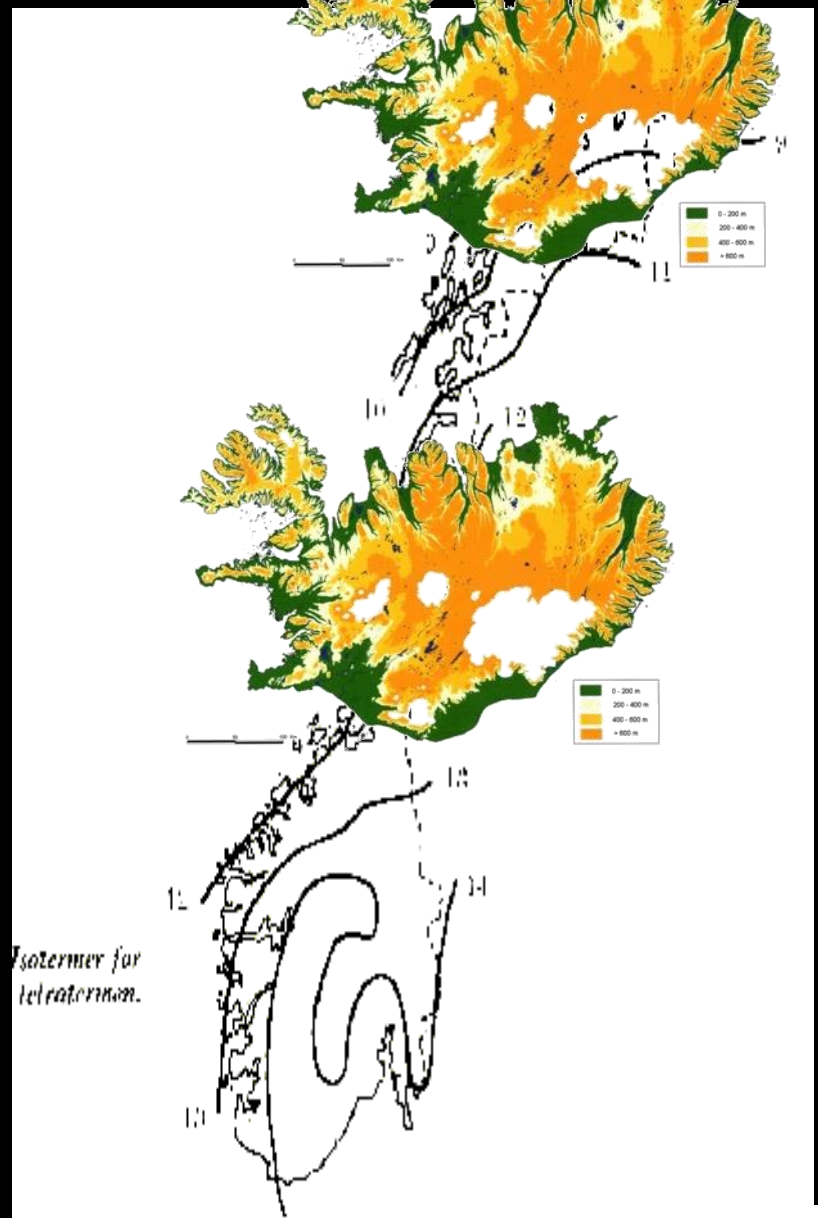
Isozerner for
telratærmann.



Northern Cereals

Ísland

Når det har fundet sin rette temperatur



Isozerner for telratormen.

Icelandic barley production statistics (averages from 2008- 2012)

Farmers growing barley	467*
Fields harvested	4.456 ha
Average fields harvested	9,5 ha
Total barley harvested	14.500 tons
Barley, average yield	3,2 tons ha ⁻¹
Average production per farm	30 tons

*690 dairy farmers in Iceland



Northern Periphery and
Arctic Programme
2014-2020



EUROPEAN UNION

Investing in your future
European Regional Development Fund

Teista, Korpu (2016)



Ugla á Korpu (2016)



Northern Periphery and
Arctic Programme
2014–2020



EUROPEAN UNION

Investing in your future
European Regional Development Fund

Proud father



Northern Cereals





Rannsóknastofnun landbúnaðarinnar

Keldnaholt við Vesturlaugarveg 10

Sími 433 5000 - Fax 433 5001

Fréttir

Dagbók



Rannsóknastofnun landbúnaðarinnar | 11/08/2002

Fyrstu erfðabættu plönturnar til hagnýtingar á Íslandi framleiddar hjá ORF Líftækni hf.

Í dag föstudaginn 8. nóvember kl. 15.00, var starfsemi fyrirtækisins kynnt í tengslum aðalfund Landssambands kornbænda, sem haldinn var í húsakynnum Rannsóknastofnunar landbúnaðarinnar á Keldnaholti. Þá var fyrsta erfðabætta byggð afhent Þorsteini Tómassyni stjórnarformanni ORF Líftækni, sem jafnframt er forstjóri Rannsóknastofnunar landbúnaðarinnar.

Hér er um að ræða mikilvægan áfanga í nýsköpun, sem gefur möguleika á nýrri og umfangsmikilli starfsemi í landbúnaði og iðnaði í framtíðinni



Þorsteini Tómassyni afhent fyrsta erfðabætta kornið

Greinasafn
Rannsóknir
Nám og námskeið
Starfsfólk
Stjórnir og nefndir
Tenglar
Áskrift að síðum

Um stofnunina
Bókasafn
Búfjársvið
Búrekstrarsvið



Northern Periphery and
Arctic Programme

2014-2020



EUROPEAN UNION

Investing in your future
European Regional Development Fund

ORF Líftækni hf.

Green factory in Grindavík (near Keflavík Airport)

Made in Iceland

BIOEFFECT





Northern Cereals

FUTURE THOUGHTS



**Northern Periphery and
Arctic Programme**
2014-2020



EUROPEAN UNION

Investing in your future
European Regional Development Fund



Northern Cereals

Climate Change



<https://climate.nasa.gov/effects/>



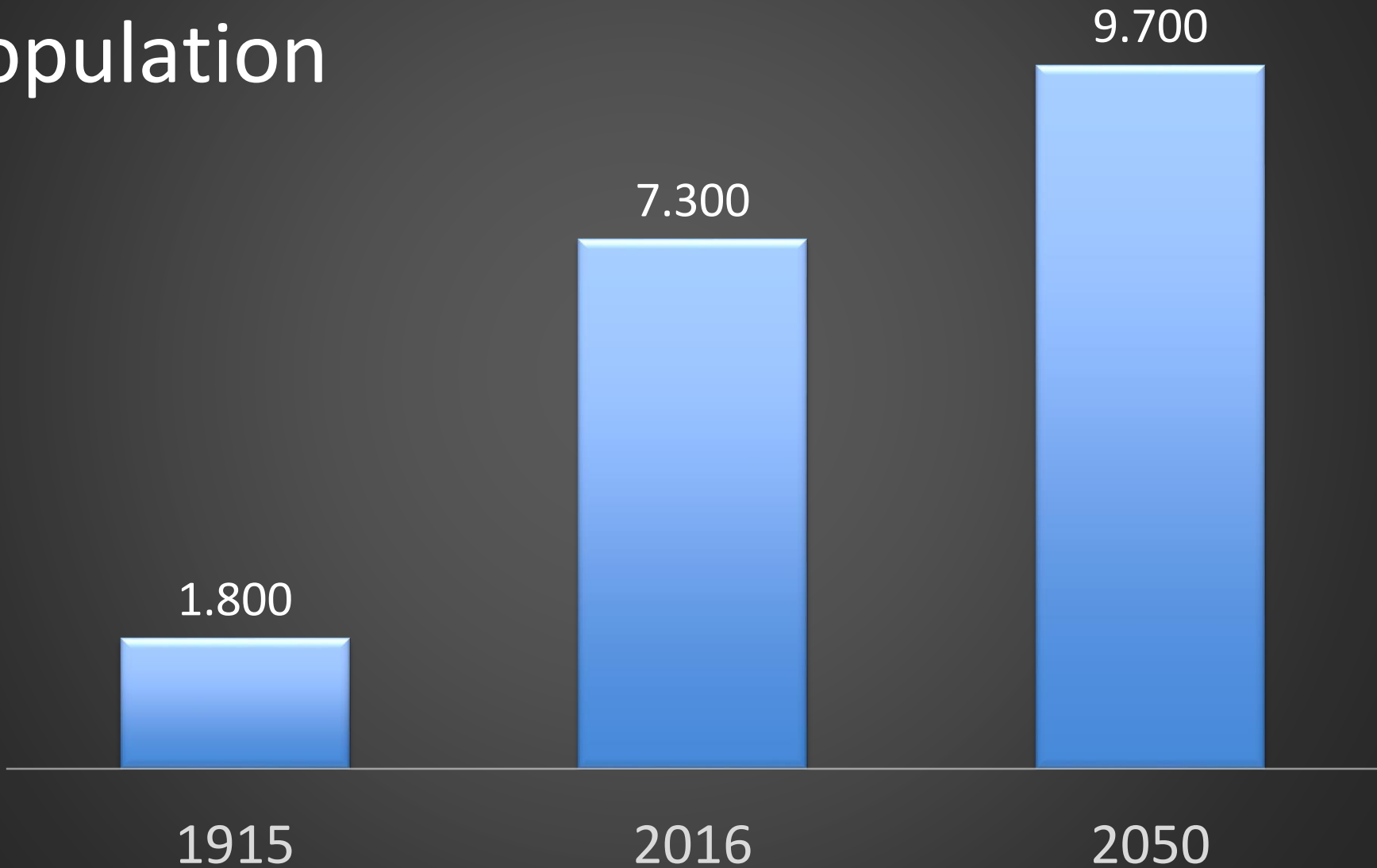
**Northern Periphery and
Arctic Programme**
2014-2020



EUROPEAN UNION

Investing in your future
European Regional Development Fund

Growing world population



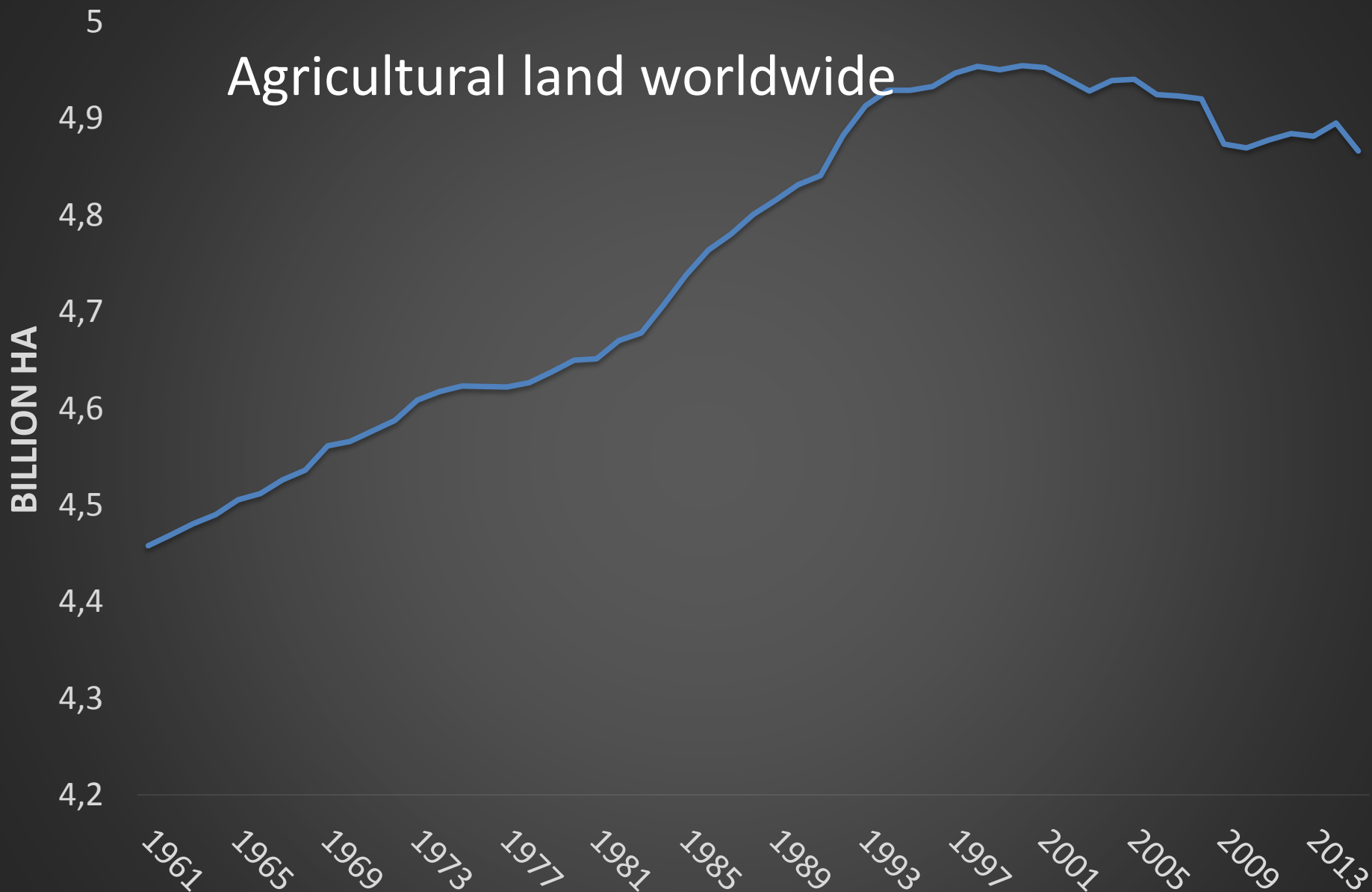
Northern Periphery and
Arctic Programme
2014-2020



EUROPEAN UNION

Investing in your future
European Regional Development Fund

Agricultural land worldwide



Northern Periphery and
Arctic Programme
2014-2020



EUROPEAN UNION

Investing in your future
European Regional Development Fund

Data: fao.org



Sustainable Development Goals

Northern Cereals

1 NO POVERTY 	2 ZERO HUNGER 	3 GOOD HEALTH AND WELL-BEING 	4 QUALITY EDUCATION 	5 GENDER EQUALITY 	6 CLEAN WATER AND SANITATION
7 AFFORDABLE AND CLEAN ENERGY 	8 DECENT WORK AND ECONOMIC GROWTH 	9 INDUSTRY, INNOVATION AND INFRASTRUCTURE 	10 REDUCED INEQUALITIES 	11 SUSTAINABLE CITIES AND COMMUNITIES 	12 RESPONSIBLE CONSUMPTION AND PRODUCTION
13 CLIMATE ACTION 	14 LIFE BELOW WATER 	15 LIFE ON LAND 	16 PEACE AND JUSTICE STRONG INSTITUTIONS 	17 PARTNERSHIPS FOR THE GOALS 	 THE GLOBAL GOALS For Sustainable Development



Important genetic resources





Northern Periphery and
Arctic Programme
2014-2020

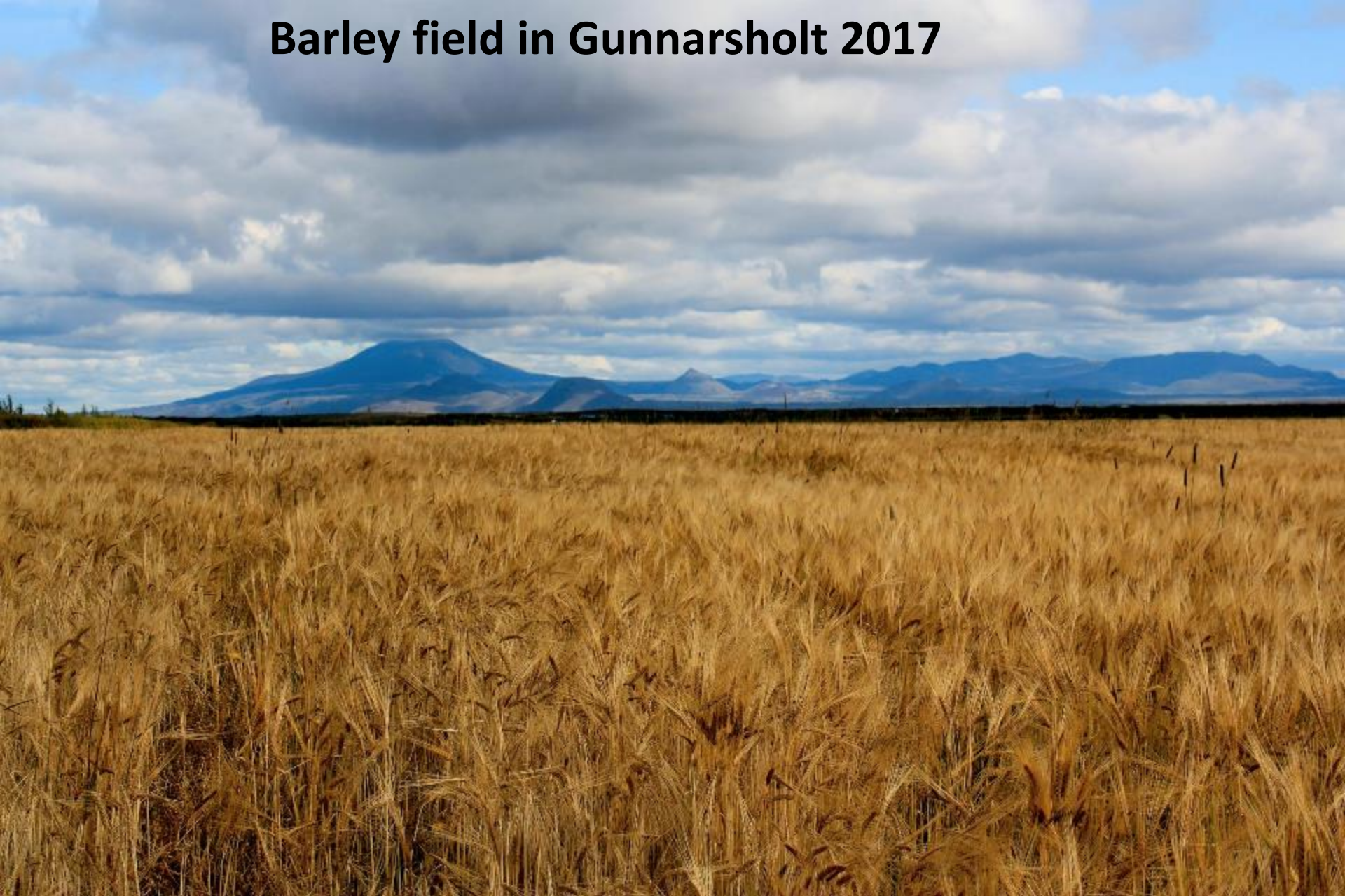


EUROPEAN UNION

Investing in your future
European Regional Development Fund

agrogen.is

Barley field in Gunnarsholt 2017



Northern Periphery and
Arctic Programme
2014-2020



EUROPEAN UNION

Investing in your future
European Regional Development Fund

Mynd: Valdimar Leifsson



UNU-LRT



UNITED NATIONS UNIVERSITY



101 graduates from 12 countries



Sustainable Development Goals

Northern Cereals

1 NO POVERTY 	2 ZERO HUNGER 	3 GOOD HEALTH AND WELL-BEING 	4 QUALITY EDUCATION 	5 GENDER EQUALITY 	6 CLEAN WATER AND SANITATION
7 AFFORDABLE AND CLEAN ENERGY 	8 DECENT WORK AND ECONOMIC GROWTH 	9 INDUSTRY, INNOVATION AND INFRASTRUCTURE 	10 REDUCED INEQUALITIES 	11 SUSTAINABLE CITIES AND COMMUNITIES 	12 RESPONSIBLE CONSUMPTION AND PRODUCTION
13 CLIMATE ACTION 	14 LIFE BELOW WATER 	15 LIFE ON LAND 	16 PEACE AND JUSTICE STRONG INSTITUTIONS 	17 PARTNERSHIPS FOR THE GOALS 	 THE GLOBAL GOALS For Sustainable Development

Korpa, August 2014



Thank you for your attention



Northern Periphery and
Arctic Programme
2014–2020



EUROPEAN UNION

Investing in your future
European Regional Development Fund

Mynd: Áskell Þórisson